



walterrobbs

ARCHITECTURE + INTERIORS + PLANNING



**Ashley Academy**

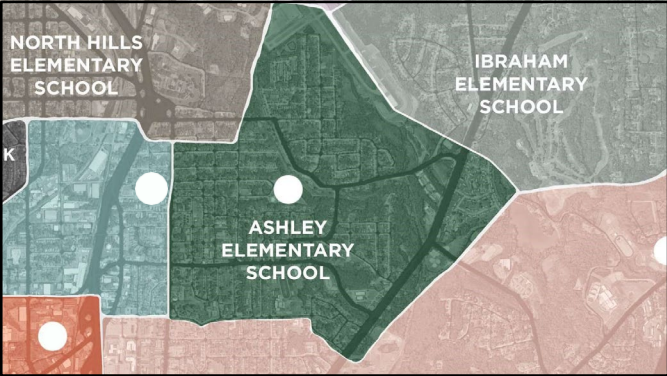
for Cultural & Global Studies



walterrobbs  
ARCHITECTURE • INTERIORS • PLANNING



walterrobbs  
ARCHITECTURE • INTERIORS • PLANNING







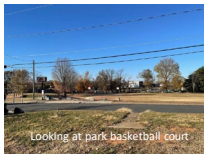
Parking lot at liberty



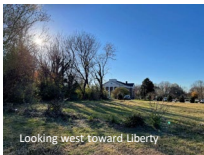
Looking at park



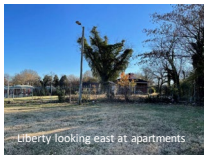
Standing at liberty looking east



Looking at park basketball court



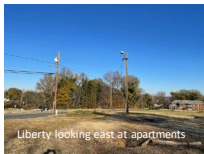
Looking west toward Liberty



Liberty looking east at apartments



Liberty looking east at apartments



Liberty looking east at apartments



Liberty looking west

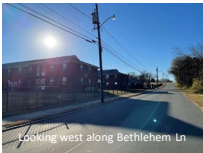


Looking west along Bethlehem In.

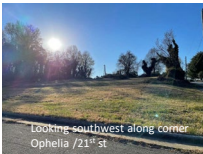
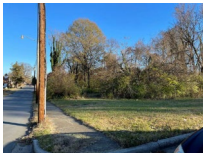


Bethlehem looking North  
along Blaireast

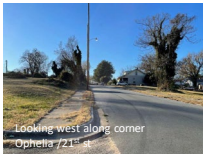




Looking west along Bethlehem Ln

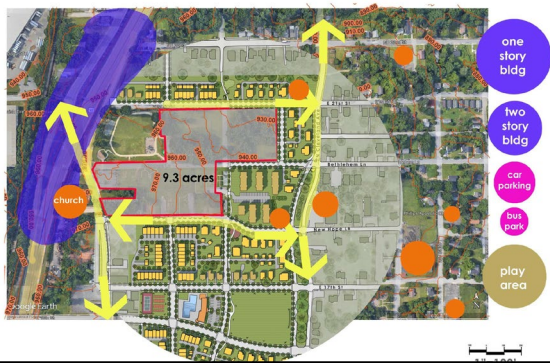


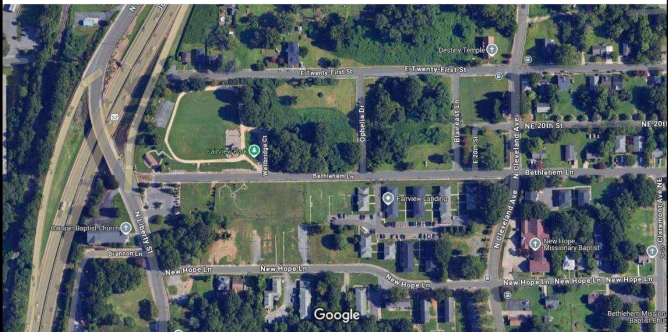
Looking southwest along corner  
Ophelia / 21<sup>st</sup> St

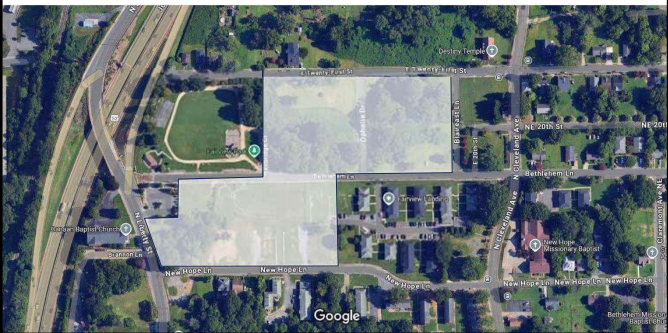


Looking west along corner  
Ophelia / 21<sup>st</sup> St













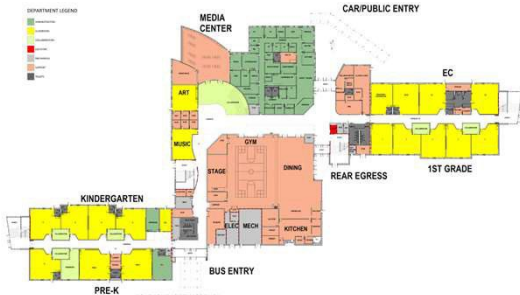
walterrobbs  
ARCHITECTURE • INTERIORS • PLANNING



walterrobbs  
ARCHITECTURE • INTERIORS • PLANNING



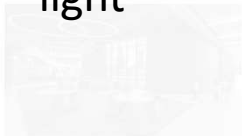




DEPARTMENT LEGEND



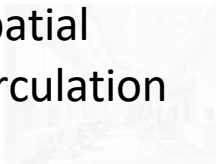
# light







# spatial circulation





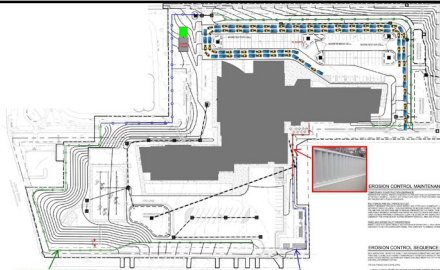








security



#### EROSION CONTROL MAINTENANCE

MAINTENANCE OF EROSION CONTROL MEASURES IS CRITICAL TO THE SUCCESS OF THE EROSION CONTROL PROGRAM. THE FOLLOWING ARE THE MAINTENANCE REQUIREMENTS FOR THE EROSION CONTROL MEASURES:

- 1. Silt fences must be inspected and maintained at least once per week during the construction period.
- 2. Silt fences must be removed or repaired if they become damaged or ineffective.
- 3. Silt fences must be installed in a manner that allows for easy access and maintenance.
- 4. Silt fences must be installed in a manner that does not obstruct traffic or pedestrian movement.
- 5. Silt fences must be installed in a manner that does not create a safety hazard.

#### EROSION CONTROL SEQUENCE

THE EROSION CONTROL MEASURES SHALL BE INSTALLED IN THE FOLLOWING SEQUENCE:

1. Silt fences shall be installed along the perimeter of the construction site.
2. Silt fences shall be installed along the perimeter of the construction site.
3. Silt fences shall be installed along the perimeter of the construction site.
4. Silt fences shall be installed along the perimeter of the construction site.
5. Silt fences shall be installed along the perimeter of the construction site.

NOTE: THE EROSION CONTROL MEASURES SHALL BE INSTALLED IN THE FOLLOWING SEQUENCE:

1. Silt fences shall be installed along the perimeter of the construction site.
2. Silt fences shall be installed along the perimeter of the construction site.
3. Silt fences shall be installed along the perimeter of the construction site.
4. Silt fences shall be installed along the perimeter of the construction site.
5. Silt fences shall be installed along the perimeter of the construction site.



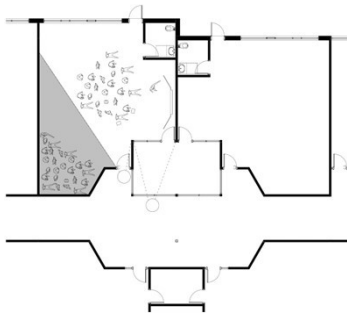
6 ft high



6 ft high



29





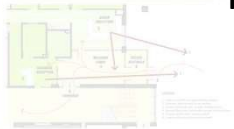






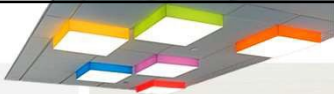


# finishes



walterrobbs  
ARCHITECTURE • INTERIORS • PLANNING

# CORRIDORS



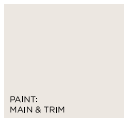
## ACCENT PAINTS



FLOOR:  
~~POLISHED CONCRETE~~ EPOXY OR TERRAZZO



WAINSCOT:  
PORCELAIN TILE W/ COVE BASE



PAINT:  
MAIN & TRIM

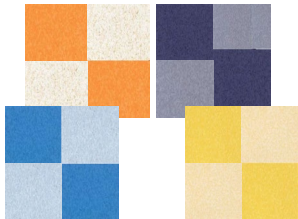


WALL PROTECTION:  
CURVED WALLS



walterrobbs  
ARCHITECTURE + INTERIORS + PLANNING

## CLASSROOM-COLLABORATION



FLOOR:  
VINYL COMPOSITION TILE



FLOOR BASE:  
RUBBER

walterrobbs  
ARCHITECTURE + INTERIORS + PLANNING



# ADAPTABILITY

